



Professor Jane Entwistle, Professor Robert Newbery and Professor Greta Defeyter OBE.

Jan 26, 2026 13:39 GMT

Northumbria Academics Appointed to National Leadership Positions

Three academics from Northumbria University have been appointed to president positions across three national organisations, reflecting the leading expertise and influence of the University in addressing critical societal challenges from environmental health and nutrition, to economic innovation.



Professor Jane Entwistle

[Professor Jane Entwistle](#), Associate Pro Vice-Chancellor for the [School of Geography and Natural Sciences](#) at Northumbria University, has been appointed President of the [Society for Environmental Geochemistry and Health \(SEGH\)](#) for a two-year term.

Founded in 1971, SEGH serves as a collaborative platform where researchers across multiple disciplines explore how geochemical environments affect the health of humans, animals, and plants. It plays a vital role in connecting increasingly complex, multidisciplinary studies to better inform stakeholders and policymakers.

Professor Entwistle's research addresses problems at the interface between geochemistry and human health, with over 25 years of experience focusing on our exposure to harmful chemicals in the environment, such as in soils, dust and air.

"Having first joined the Society as a PhD student in the early 1990s, it's especially meaningful to now help shape the organisation's future direction as we develop our new five-year strategy," said Professor Entwistle.

"The multidisciplinary nature and sense of community within SEGH are as relevant today as when the Society was formed in the early 1970s. SEGH members' skills, interests, and capabilities are well-positioned to continue making meaningful contributions to understanding how our environment affects society and well-being and to tackling the increasing environmental

pressures from human activities."



Professor Greta Defeyter OBE

[Professor Greta Defeyter](#) OBE, Dean of Social Mobility Policy Engagement and Director of the University's [Healthy Living Lab](#), has been appointed President of the [Royal Society of Medicine's \(RSM\) Food & Health Forum](#).

The RSM Food & Health Forum explores and develops the relationships between diet, dietary ingredients and health through educational events and research collaboration, and the connections between diet, behaviour, environment and health.

Professor Defeyter's appointment builds on her internationally recognised research into food insecurity, child development, and social mobility. Her work has directly influenced government policy on school breakfast programmes and the Holiday Activity and Food (HAF) Programme, translating academic research into tangible improvements in children's lives.

"The connections between nutrition, health outcomes, and social equity have never been more critical to understand and address," said Professor Defeyter. "I'm honoured to lead the RSM Food and Health Forum as we work to strengthen the evidence base linking dietary interventions to improved health and wellbeing, particularly for vulnerable populations."



Professor Robert Newbery

[Professor Robert Newbery](#) from Northumbria's Newcastle Business School has been appointed President of [the Institute of Small Business and Entrepreneurship \(ISBE\)](#) for a two-year tenure, having previously served as Deputy President.

ISBE is a learned society dedicated to enabling excellence in small business and entrepreneurship across research, policy, practice and learning communities. As President, Professor Newbery will focus on enhancing support for early and mid-career researchers, among other important responsibilities.

Professor Newbery brings extensive international experience from Asia, Africa, Europe and North America, along with practical entrepreneurial expertise having founded and led multiple businesses. His research explores the intersection of entrepreneurship and poverty.

He said: "Small businesses and entrepreneurs are vital to economic innovation and community resilience, yet they often face unique challenges. As ISBE President, I'm committed to strengthening our community of scholars, practitioners, and policymakers, ensuring we provide meaningful support for entrepreneurs - particularly those operating in peripheral and underserved communities."

The appointments reflect Northumbria University's commitment to research excellence with real-world impact. Find out more about how [Northumbria](#)

[University is making a difference to individuals and society through its research.](#)

UNIVERSITY OF THE YEAR 2022 (Times Higher Education Awards)

Northumbria is a research-intensive university that unlocks potential for all, changing lives regionally, nationally and internationally.

Two thirds of Northumbria's undergraduate students come from the North East region and go into employment in the region when they graduate, demonstrating Northumbria's significant contribution to social mobility and levelling up in the North East of England.

Find out more about us at www.northumbria.ac.uk

--- Please contact media.communications@northumbria.ac.uk with any media enquiries or interview requests ---

Contacts



Andrea Slowey

Press Contact

Head of Corporate Communications (interim)

andrea.slowey@northumbria.ac.uk

07708 509436



Rachael Barwick

Press Contact

PR and Media Manager

rachael.barwick@northumbria.ac.uk

07377422415



James Fox

Press Contact

Student Communications Manager

james2.fox@northumbria.ac.uk



Kelly Elliott

Press Contact

PR and Media Officer

kelly2.elliott@northumbria.ac.uk



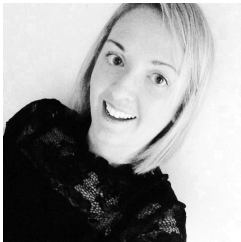
Ruth Lognonne

Press Contact

PR and Media Officer

ruth.lognonne@northumbria.ac.uk

07923 382339



Gemma Brown

Press Contact

PR and Media Officer

gemma6.brown@northumbria.ac.uk