



Bede Academy Trinity Health Centre launch event with first cohort, Bede Academy teaching staff, Marion Dickson and Helen Bower

Oct 14, 2024 13:11 BST

Healthcare training facility opens to support delivery of new T-level course

A brand-new healthcare training facility which has been developed with support from Northumbria University to be used by students on a new T-Level in health course has opened at Bede Academy in Blyth.

The course, which saw its first cohort start studying in September, is designed to support young people considering careers in healthcare. It will provide hands-on practical experience that will help them achieve their aspirations

and go on to further training or study within the healthcare sector.

With a strategy to ignite aspiration and offer routes for students from all background to access and succeed in higher education, Northumbria University was keen to work with the team at Bede Academy on the development of a programme that would encourage young people into health-related careers.

Experts from the University's Department of Nursing, Midwifery and Health, and its student recruitment team, worked collaboratively with Bede Academy to develop the course curriculum and to train their teachers to deliver the course from its campus in Blyth.

The centre – which was inspired by the clinical skills facility at Northumbria University - includes a ward environment designed to give learners hands on experience in a simulated environment. The facility was officially opened by Marion Dickson, the Executive Director of Nursing, Midwifery and Allied Health Professionals at Northumbria Healthcare NHS Foundation Trust.

The T-Level in qualification is the equivalent of three A-Levels and is designed to offer an alternative route into the health sector for those taking their first steps towards their future career.

The two-year course, which includes a 45-day placement, covers a range of areas including working in the sector, health and safety, managing information and data, good scientific and clinical practice, person-centric care, health and wellbeing, infection prevention and control and safeguarding, as well as some core science concepts and their application in health.

During their second year of study, students will have the opportunity to specialise before progressing onto a degree course, a higher-level apprenticeship or employment within the health sector.

Helen Bower, Chief Marketing Officer at Northumbria University, who is responsible for student recruitment and liaison with schools and colleges, said: "We're delighted to see the formal opening of the clinical skills facilities within the new Trinity Health Centre at Bede Academy. Our partnership with Bede Academy is a fantastic example of what we can achieve when we work

in collaboration with schools and colleges to achieve a common goal of supporting young people within our region to achieve their aspirations.

“Northumbria University is one of the largest centres for healthcare professional education in the North of England. My hope is that in due course we’ll see many of the students who are studying the T-Level in health join us to pursue their careers in healthcare.”

Natalie Winchester, Subject Lead Health and Social Care, T-Level Health Lead and Post-16 Raising Standard Leader at Bede Academy said “The partnership between Bede Academy and Northumbria University has been vital in the success of setting up of the T-level.

“We have had invaluable support with curriculum, access to their academic expertise, and the ability to share resources and advice. The partnership has been full of positivity and forward thinking and the opening of Trinity Health Centre was a fantastic event where we saw the journey from the planning stages come to fruition.

“The course has started very positively with our first cohort settling in well and enjoying their learning and many already expressing interest in studying the course next year. The current students have already experienced teaching from Northumbria staff and look forward to visiting the University’s clinical skills centre later in the term.”

Amelia, one of the first students to enrol on the new course, said: “Most of my family work in the healthcare sector. I like to help people, so I’ve always known this is what I want to do. If the T-Level in Health wasn’t provided by school, I think I’d be a bit stuck as I know what I want to do but wouldn’t really be sure how to get there. Having it on-site as part of sixth form is also great as I get to stay here with my friends for another two years, also I know the teachers and they know me so it’s just a really great opportunity.

“I want to go on to be a midwife or to work in neonatal care specifically and I’m hoping to apply and study at Northumbria University after this course. We’ve visited the University as part of this course and the facilities are great so that’s where I’m hoping to be.”

Andrew Thelwell, Principal at Bede Academy said: “It is fantastic to see this

health facility up and running for our T Level Health students. They are excited by the opportunity to learn and develop their skills here and we hope that this will inspire them to pursue careers across the health professions.

“Particular thanks need to go to colleagues from Northumbria Healthcare NHS Foundation Trust and the University of Northumbria for their support in bringing the vision for this facility to life. It has also been a privilege to have Marion Dickson on-site to open the facility. Acknowledgement and thanks must also go to staff from the Academy and the Emmanuel Schools Foundation for the work they have done to design and launch this course for our students.’

Northumbria University is one of the largest centres for healthcare professional education in the North of England, offering a range of [specialist degree and CPD programmes](#) across many areas of nursing, midwifery, operating department practice, physiotherapy and occupational therapy. The University’s Children’s Nursing programme is [ranked third in the UK](#) in the latest Guardian University Guide.

UNIVERSITY OF THE YEAR 2022 (Times Higher Education Awards)

Northumbria is a research-intensive university that unlocks potential for all, changing lives regionally, nationally and internationally.

Two thirds of Northumbria's undergraduate students come from the North East region and go into employment in the region when they graduate, demonstrating Northumbria's significant contribution to social mobility and levelling up in the North East of England.

Find out more about us at www.northumbria.ac.uk

--- Please contact media.communications@northumbria.ac.uk with any media enquiries or interview requests ---

Contacts



Rik Kendall

Press Contact
PR and Media Manager
Business and Law / Arts, Design & Social Sciences
rik.kendall@northumbria.ac.uk
07923 382339



Andrea Slowey

Press Contact
PR and Media Manager
Engineering and Environment / Health and Life Sciences
andrea.slowey@northumbria.ac.uk
07708 509436



Rachael Barwick

Press Contact
PR and Media Manager
rachael.barwick@northumbria.ac.uk
07377422415



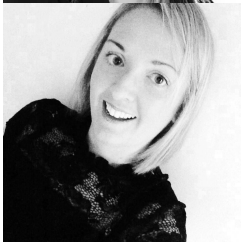
James Fox

Press Contact
Student Communications Manager
james2.fox@northumbria.ac.uk



Kelly Elliott

Press Contact
PR and Media Officer
kelly2.elliott@northumbria.ac.uk



Gemma Brown

Press Contact
PR and Media Officer
gemma6.brown@northumbria.ac.uk