



Nov 07, 2017 12:58 GMT

EXPERT COMMENT: Hydroelectric dams threaten Brazil's mysterious Pantanal - one of the world's great wetland

Senior Lecturer in Physical Geography, Dr Bronwen Whitney, contributes to an article discussing Hydroelectric dams threatening Brazil's mysterious Pantanal for The Conversation.

The Pantanal in central South America may not be as globally famous as the Amazon rainforest, but it has the continent's highest concentration of wildlife. Now, however, the region's endangered plants and animals, along with its still undiscovered secrets, may be wiped out in return for cheap

hydroelectricity.

The Pantanal is the world's largest tropical wetland and covers an area slightly larger than England. It lies mostly on a huge floodplain at the foot of Brazil's southwestern highlands, but a fraction also spills over into Bolivia and Paraguay. In the wet season, from October to April, water washes down from those highlands bringing with it nutrients and fish and leaving most of the region underwater. When the rains finish, and the ground dries up, the landscape changes once again.

Seasonal variation on such a massive scale means the Pantanal contains a diverse range of plants and animals that have adapted to thrive in standing water or waterlogged soil. The region is home to more than 1,000 bird species and 300 mammals including the jaguar, capybara, giant otter and tapir.

Yet the Pantanal is now threatened by Brazil's thirst for hydroelectricity. We are part of a group of researchers investigating the state of Mato Grosso, where the rush to build dams is particularly apparent. Mato Grosso holds the upper reaches of the Pantanal, but is probably more famous for the Amazon rainforest in the north of the state and the enormous "fazendas" (large farms) on its fringes which produce soya, beef and cotton.

This mixture of natural resources and fertile land means Mato Grosso has a long history of environmental issues. However, if the state today is recognised as a deforestation hotspot, soon it may be known for its dams. This is because the height difference between the rainy plateau in the north of the state and its southern plains means there is lots of hydroelectric potential.

Mato Grosso is following a nationwide trend. After a series of major blackouts in 2001 which highlighted Brazil's energy insecurities, the country turned to hydroelectricity. Since then, a wave of dams have been, or are planned to be, constructed to satisfy the ever increasing demand for energy.

Over the past few years, Brazil's growth acceleration programme has allowed for the increased construction of hydroelectric dams in the state, while also removing or weakening some environmental laws.

There are already 38 operational hydroelectric plants in the Paraguay river's upper basin, the region that drains into the Pantanal. A further 94 are due to be built in coming years.

In Brazil, dams are classified in two categories: those that are able to produce more than 30MW of energy, and small hydroelectric plants (SHP) with a capacity of less than 30MW and a reservoir of less than 13km². These small plants are seen as more environmentally friendly and are commonly constructed as part of a chain along the length of the river.

In the Amazon, the impacts of the bigger dams have been well documented. Fish numbers are down, and irregular floods have exposed dry land that had previously been submerged during the wet season.

Less research has been conducted in the Pantanal basin but the few reports that have investigated dams there report similar results. Additionally, one larger dam led to river depth fluctuating by several metres over weekly or even daily periods, confusing fish and affecting water quality. Less is currently known about the impacts of the smaller hydroelectric dams but, as they still store some water in the reservoir in order to produce energy at peak times, especially in low-flow rivers, they thus also affect the river's daily fluctuations.

What we do know is that too many dams on the rivers that feed the Pantanal would disrupt the natural rhythm of the wetland. Large-scale cattle ranchers, soy farmers and city dwellers drive year-round demand for water and energy, which would put the seasonal flood "pulse" at risk. In this scenario, species that have adapted themselves over thousands of years to life in an on-off wetland may find themselves thrown out of sync.

Even several small plants close to each other can produce new patches of still surface water, fragmenting ecosystems and affecting ecological relationships. Meanwhile, those whose livelihoods are dependent on these cycles, mainly traditional fishing communities, may find they can no longer survive.

As the impacts of hydroelectric dams become apparent in the Amazon, it is crucial that we do not forget the Pantanal. If the wetland is going to survive, it will take a concerted effort from all actors who use its resources to work together. The Pantanal is a complex ecosystem where society and the

environment clash on a number of issues. With the increasing demand for electricity and solar and wind options being little investigated in Mato Grosso, it is important the full impacts of hydroelectric generation are known.

This article was originally published on [The Conversation](#). Read the original [article](#)

Northumbria is a research-rich, business-focused, professional university with a global reputation for academic excellence. To find out more about our courses go to www.northumbria.ac.uk

If you have a media enquiry please contact our Media and Communications team at media.communications@northumbria.ac.uk or call 0191 227 4604.

Contacts



Rik Kendall

Press Contact
PR and Media Manager
Business and Law
rik.kendall@northumbria.ac.uk
07923 382339



Andrea Slowey

Press Contact
PR and Media Manager
Engineering and Environment / Health and Life Sciences
andrea.slowey@northumbria.ac.uk
07708 509436



James Fox

Press Contact
Student Communications Manager
james2.fox@northumbria.ac.uk



Rachael Barwick

Press Contact
PR and Media Coordinator
Health and Life Sciences / Sport
rachael.barwick@northumbria.ac.uk
07377422415



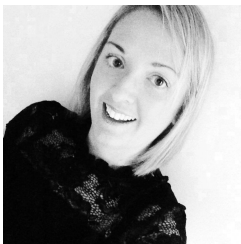
Ruth Lognonne

Press Contact
PR and Media Coordinator
Health and Life Sciences / Sport
ruth.lognonne@northumbria.ac.uk
07971274253



Emily Morris

Press Contact
Corporate Communications Coordinator
emily.l.morris@northumbria.ac.uk



Gemma Brown

Press Contact
PR and Media Coordinator
Arts Design and Social Sciences / Engineering and Environment
gemma6.brown@northumbria.ac.uk