



Nov 10, 2021 09:47 GMT

EXPERT COMMENT: Disabled children still face exclusion in PE – here’s what needs to change

[Kevin Dixon](#), Senior Lecturer in Sport, Exercise and Rehabilitation at Northumbria University and [Tom Gibbons](#), Senior Lecturer in Sport and Exercise at Teesside University discuss the challenges faced by disabled children in physical education and the action needed to create inclusive education.

Children between the ages of five and 18 should do a minimum of [60 minutes of exercise a day](#) across the week, according to UK government

recommendations. And physical education (PE) is, of course, one of the main ways in which both primary and secondary schools meet these guidelines.

As disabled children are more likely to be [sedentary](#), it's particularly important that they can take part in school exercise. Surveys [have also shown](#) that most disabled children would like to be able to take part in PE more often. Yet our [latest research](#), assisted by recently retired academic and former Paralympic athlete [Dr Stuart Braye](#), shows that disabled children attending mainstream schools still experience many difficulties in joining in with PE lessons.

At the first world conference on [special needs education](#) held in Spain, in 1994, representatives of 92 countries declared that [inclusive education was the right](#) of all children. It should be the norm in all schools, they said.

Nearly three decades on, however, [personal accounts](#) of [social isolation](#) and non-inclusive mainstream education show that school, for many children with disabilities, is anything but inclusive.

Ensuring that classes and equipment both are adaptable to varying degrees of physical disability is crucial.

Inclusive PE

This is especially true for PE. In 2015, [UNESCO](#) called for all educational establishments to ensure that inclusive, adaptive and safe opportunities to participate in PE be provided for disabled children. Yet despite advances in disability equality legislation both [on a global level](#) and [in the UK](#) specifically, this has long [not been the case](#).

[Research](#) has consistently shown that disabled children experience a less-than-welcoming attitude in mainstream school PE. They don't have access to the right equipment, they feel marginalised and excluded by both non-disabled peers and teachers. Crucially, PE teachers are not adequately trained to support their needs.

Inadequate teacher training

Studies also show that PE teachers feel [under prepared](#) and [ill-equipped](#) to

include disabled children in PE lessons. In our [recent study](#), for which we interviewed families of disabled children, PE teachers and teacher training providers, we found evidence that initial teacher training (ITT) programmes are inadequate.

The growing popularity of Paralympic sports has not translated into daily support for children with disabilities to access PE.

One of the main reasons for this is that the once popular four-year bachelor of education courses have for many been replaced by one-year ITT courses. As a result, the inclusion of disabled children is only covered superficially.

PE teaching professionals also revealed that ITT provision interprets the term “inclusion” in the broadest possible sense. This means that disability becomes one among many equality issues to be covered as part of a full curriculum.

Our respondents said that the opportunity to work with disabled children during training is essential. Doing a placement within a school that caters to disabled pupils, particularly a [special-needs school](#), would give student teachers the chance to build competence and confidence to develop appropriate inclusion strategies. Instead, our respondents said, many ITT work placements do not introduce trainee teachers to disabled children at all.

More input from disabled people into PE teacher training would also be beneficial. None of the participants in our study had ever heard of a disabled PE teacher. Indeed, [research shows](#) only 0.5% of the teaching workforce reports having disabilities.

Yet none of our study participants could think of any reason why a disabled person could not complete a PE teacher training qualification and practice as a PE teacher. Perhaps this is what it would take to ensure inclusive education, and inclusive PE, becomes a reality for all children with disabilities.

[This article was originally published on The Conversation.](#)

Northumbria is a research-rich, business-focused, professional university with a global reputation for academic excellence. Find out more about us at www.northumbria.ac.uk --- Please contact our Media and Communications

team at media.communications@northumbria.ac.uk with any media enquiries or interview requests ---

Contacts



Rik Kendall

Press Contact
PR and Media Manager
Business and Law / Arts, Design & Social Sciences
rik.kendall@northumbria.ac.uk
07923 382339



Andrea Slowey

Press Contact
PR and Media Manager
Engineering and Environment / Health and Life Sciences
andrea.slowey@northumbria.ac.uk
07708 509436



James Fox

Press Contact
Student Communications Manager
james2.fox@northumbria.ac.uk



Kelly Elliott

Press Contact
PR and Media Officer
kelly2.elliott@northumbria.ac.uk



Rachael Barwick

Press Contact
PR and Media Manager
rachael.barwick@northumbria.ac.uk
07377422415



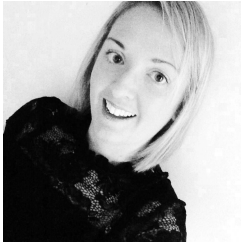
Ruth Lognonne

Press Contact

PR and Media Officer

ruth.lognonne@northumbria.ac.uk

07971274253



Gemma Brown

Press Contact

PR and Media Officer

gemma6.brown@northumbria.ac.uk