



Feb 03, 2016 10:32 GMT

Global sea levels could rise due to melting Antarctic ice

Loss of ice in Antarctica caused by a warming ocean could raise global sea levels by three metres, research by Northumbria and Edinburgh universities suggests.

Scientists carrying out fieldwork in the region have assessed the landscape to determine how the West Antarctic ice sheet might respond to increasing global temperatures.

In the first study of its kind, researchers were able to gauge how levels of ice

covering the land have changed over hundreds of thousands of years. They did so by studying peaks protruding through ice in the Ellsworth Mountains, on the Atlantic flank of Antarctica.

The team assessed changes on slopes at various heights on the mountainside, which indicate levels previously reached by the ice sheet. They also mapped the distribution of boulders on the mountainside, which were deposited by melting glaciers. Chemical technology – known as exposure dating – showed how long rocks had been exposed to the atmosphere, and their age.

Their results indicate that during previous warm periods, a substantial amount of ice would have been lost from the West Antarctic ice sheet by ocean melting, but it would not have melted entirely. This suggests that ice would have been lost from areas below sea level, but not on upland areas. The research shows that parts of the West Antarctic ice sheet have existed continuously for at least 1.4 million years.

The study, published in Nature Communications, was carried out by researchers at Northumbria University and the University of Edinburgh, alongside the Scottish Universities Environmental Research Centre. It was supported by the Natural Environment Research Council and the British Antarctic Survey.

[Professor John Woodward](#), Northumbria's Associate Dean (Research and Innovation) in Engineering and Environment, co-led the study.

He said: "It is possible that the ice sheet has passed the point of no return and, if so, the big question is how much will go and how much will sea levels rise."

Dr Andrew Hein, of the University of Edinburgh's School of GeoSciences, joint leader of the study, added: "Our findings narrow the margin of uncertainty around the likely impact of the West Antarctic Ice Sheet on sea level rise. This remains a troubling forecast since all signs suggest the ice from West Antarctica could disappear relatively quickly."

Cold and paleo environments are one of Northumbria's research specialisms in the Department of Geography. Research involves field based projects in

cold regions across the globe, including Antarctica, a range of high Arctic European and Canadian sites, New Zealand, the Alps, Alaska and Chile.

The group applies novel techniques to field data collection, including ground-penetrating radar, new borehole radar technologies, seismics, NIR camera techniques, meteorological monitoring technologies, the use of unmanned aerial vehicles (UAV) and terrestrial laser scanning (TLS), to address fundamental questions in Earth Systems Science. Cutting-edge physical and numerical modelling, remote sensing and laboratory techniques for palaeo-environmental work are also applied.

Northumbria offers a range of courses in Geography and is ranked Top 30 in the UK based on research power following the results of the Research Excellence Framework 2014. To find out more about studying at Northumbria go to: www.northumbria.ac.uk/geography

Northumbria is a research-rich, business-focused, professional university with a global reputation for academic excellence. To find out more about our courses go to www.northumbria.ac.uk

If you have a media enquiry please contact our Media and Communications team at media.communications@northumbria.ac.uk or call [0191 227 4571](tel:01912274571).

Contacts



Andrea Slowey

Press Contact

Head of Corporate Communications (interim)

andrea.slowey@northumbria.ac.uk

07708 509436



Rachael Barwick

Press Contact

PR and Media Manager

rachael.barwick@northumbria.ac.uk

07377422415



James Fox

Press Contact

Student Communications Manager

james2.fox@northumbria.ac.uk



Kelly Elliott

Press Contact

PR and Media Officer

kelly2.elliott@northumbria.ac.uk



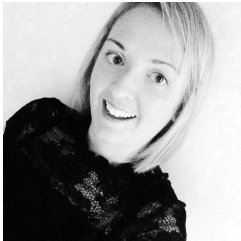
Ruth Lognonne

Press Contact

PR and Media Officer

ruth.lognonne@northumbria.ac.uk

07923 382339



Gemma Brown

Press Contact

PR and Media Officer

gemma6.brown@northumbria.ac.uk