

Close 'en-counters' of the geographical kind

Developed by Northumbria University academics in partnership with the Holy Biscuit and Juice Festival, 'en_counter' is an exhibition of mapping and artwork which provides insights into Newcastle-Gateshead's geographies. It forms part of a two-year research project by [Jon Swords](#) and [Mike Jeffries](#), from Northumbria's [Department of Geography](#), and [Sebastian Messer](#), from the

University's [Department of Architecture and Built Environment](#). The research is supported by the Juice Festival, and examines how young people understand the city, their place in it, and their vision for the future.

The academic team has collaborated with artists Christine Egan-Fowler, Ben Jones, Jess Dolby and Adam Goodwin to provide mapping workshops in schools and youth groups. The maps from these workshops reveal hidden worlds and perspectives on the city, and have prompted the artistic responses which form the exhibition. 'En_counter' will launch during the Late Shows – Newcastle-Gateshead's annual festival of after dark culture – ahead of a general exhibition at the Holy Biscuit Gallery in Newcastle, which will run until June.

Jon said: "Working with the Holy Biscuit is a fantastic opportunity for us to create artistic encounters drawing on the meticulous and thoughtful maps from the young people we've worked with. How cities are mapped is intensely political, and we hope by revealing the worlds of young people their perspectives will be valued and integrated into future visions of the city."

The results of the first year of research will be launched in October 2016 as part of the Juice Festival. Together with New Writing North, the team will produce a manifesto for the city in the form of an atlas including, and based on maps made by young people. If you would like more information, or want to get involved, there is a project website:

<https://accidentalyouthclub.wordpress.com/juice/> or email jon.swords@northumbria.ac.uk.

'en_counter' is taking place at the Holy Biscuit, Clarence Street, Newcastle. Call 0191 447 6811 or go to <http://www.theholybiscuit.org>. Late Shows opening: 7-11pm, Friday 13 and Saturday 14 May / General exhibition: 11am – 4pm, Tuesday 17 May – Thursday 2 June.

The University offers a range of courses in Geography with the department ranked Top 30 in the UK based on research power following the results of the Research Excellence Framework 2014. To find out more about studying at Northumbria go to: www.northumbria.ac.uk/geography or sign up for one of our upcoming Open Days in July by clicking [here](#).

Northumbria is a research-rich, business-focused, professional university with a global reputation for academic excellence. To find out more about our courses go to www.northumbria.ac.uk

If you have a media enquiry please contact our Media and Communications team at media.communications@northumbria.ac.uk or call [0191 227 4571](tel:01912274571).

Contacts



Rik Kendall

Press Contact
PR and Media Manager
Business and Law / Arts, Design & Social Sciences
rik.kendall@northumbria.ac.uk
07923 382339



Andrea Slowey

Press Contact
PR and Media Manager
Engineering and Environment / Health and Life Sciences
andrea.slowey@northumbria.ac.uk
07708 509436



Rachael Barwick

Press Contact
PR and Media Manager
rachael.barwick@northumbria.ac.uk
07377422415



James Fox

Press Contact
Student Communications Manager
james2.fox@northumbria.ac.uk

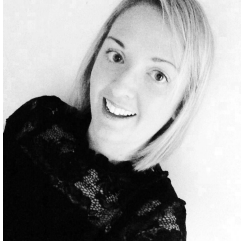


Kelly Elliott

Press Contact

PR and Media Officer

kelly2.elliott@northumbria.ac.uk



Gemma Brown

Press Contact

PR and Media Officer

gemma6.brown@northumbria.ac.uk